

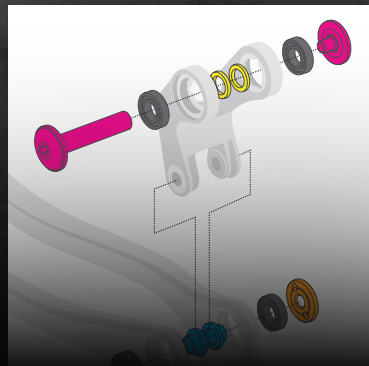
REVOLVER



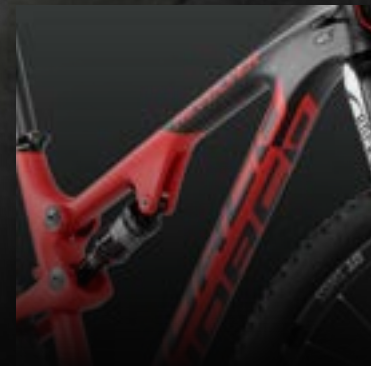
TECHNICAL SUPPORT DOCUMENT
2016-2017 FULL SUSPENSION MODELS C7 C9



WARRANTY



SMALL PARTS



FRAME SPEC/SERVICING

WARRANTY INFORMATION

COMPLETE BIKES

ONE YEAR LIMITED WARRANTY

NORCO Bicycles (hereinafter called NORCO) warrants the replacement or repair at its sole option of any original part due to defect in material and/or workmanship for the period of one year from the original date of purchase. Such purchase must be documented by presentation of the original sales slip or other proof of purchase by the original owner. Transportation and dealer labour charges are not covered hereunder.

This warranty applies to Norco branded products and pivots* on our suspension bikes. Any other original part or component shall be covered by the stated warranty of the original manufacturer. Any products not specifically included above are hereby omitted.

FULL SUSPENSION FRAMES

LIMITED LIFETIME WARRANTY

Norco warrants all full-suspension frames against defects in material and/or workmanship pursuant to the terms and conditions outlined above, for the lifetime of the frame to the original owner following the date of purchase. Suspension forks and rear shocks are not considered part of the frame, and are therefore not covered under the terms of the frame warranty. Each fork and rear shock manufacturer designates a specific warranty policy for their product, which is written in the specific Suspension Owner's Manual included with each NORCO bike. If you do not receive this manual from your dealer at time of purchase, please make sure to request it.

Failure of any frame or component due to accident, abuse, neglect, normal wear, stunt riding, bicycle racing or competitive event, commercial use, rental use, improper assembly, improper fit, maintenance and/or assembly by any other than an authorized NORCO dealer or use of parts inconsistent with the use originally intended for the bicycle as sold, are not covered by this warranty.

COMPOSITE FRAMES

LIMITED LIFETIME WARRANTY

Norco warrants all composite frames against defects in material and/or workmanship pursuant to the terms and conditions outlined under "COMPLETE BIKES" for the lifetime of the frame to the original owner following the date of purchase. Frames with Norco carbon or aluminum rigid forks will follow the same warranty as the frame warranty. Suspension forks and rear shocks are not considered part of the frame, and are therefore not covered under the terms of the frame warranty. Each fork and rear shock manufacturer designates a specific warranty policy for their product, which is written in the specific Suspension Owner's Manual included with each NORCO bike. If you do not receive this manual from your dealer at time of purchase, please make sure to request it.

Failure of any frame or component due to accident, abuse, neglect, normal wear, stunt riding, bicycle racing or competitive event, commercial use, rental use, improper assembly, improper fit, maintenance and/or assembly by any other than an authorized NORCO dealer or use of parts inconsistent with the use originally intended for the bicycle as sold, are not covered by this warranty.

There are no other warranties or guarantees expressed or implied by NORCO. The exclusive liability of NORCO and/or any of its authorized dealers, affiliates or agents pursuant to this warranty shall be replacement or repair of the defective part. Incidental or consequential damages are expressly excluded hereunder.

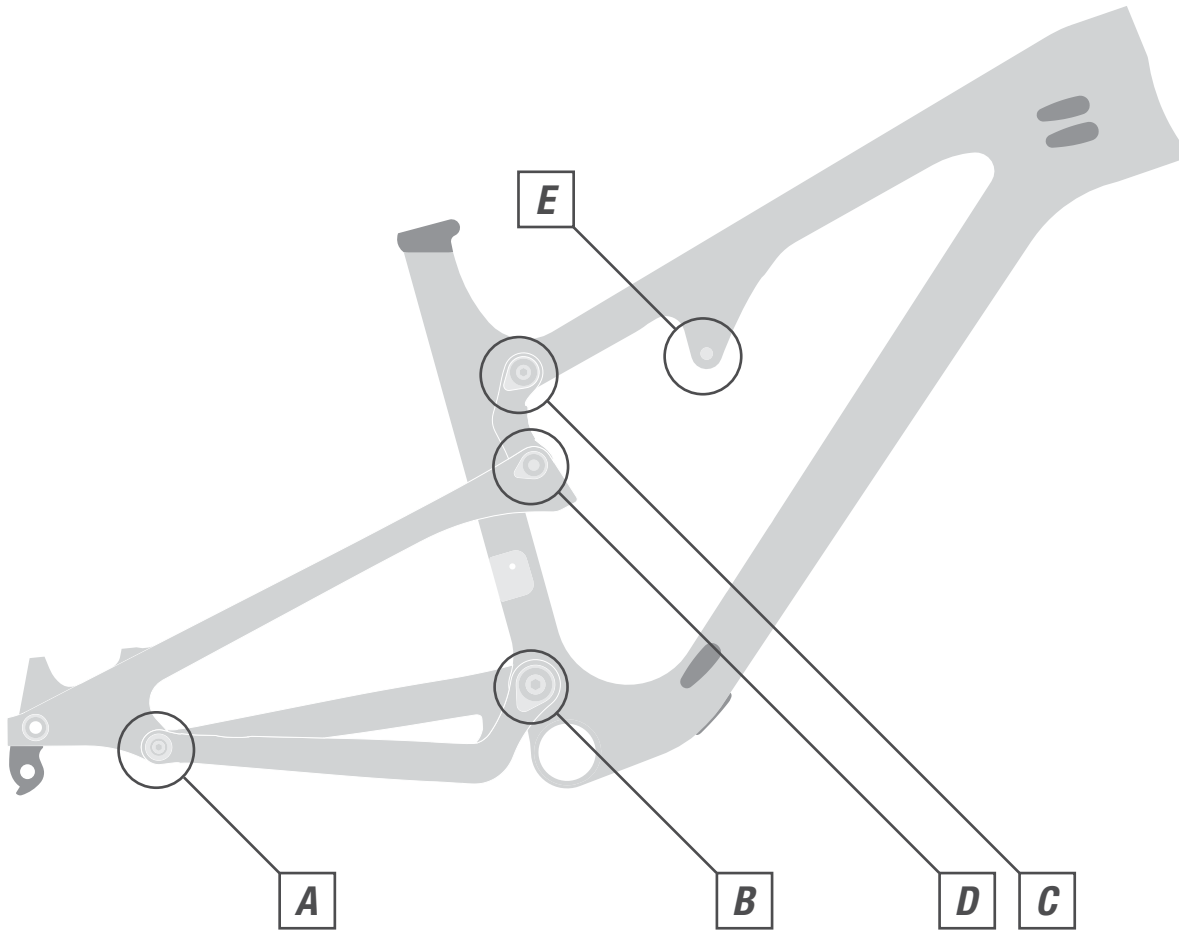
EXCLUSIONS

- User Abuse
- Accidental Damage
- Normal wear and tear including fatigue (which is symptom of the frame being worn out through normal use)
- Improper assembly or maintenance
- Commercial Use
- Rentals
- Stunting and Jumping
- Labour
- The frame and/or its components were modified (ex: polishing, structural or mechanical modification or addition, stripping, sanding, strain hardening, shot peening)
- The bicycle was purchased from a retailer other than those authorized by Norco
- The bicycle was not fully assembled by an authorized Norco retailer;
- The bicycle was repaired by a person other than an authorized Norco retailer;
- Installation of components, parts, or accessories not originally intended for or compatible with the bicycle as sold.

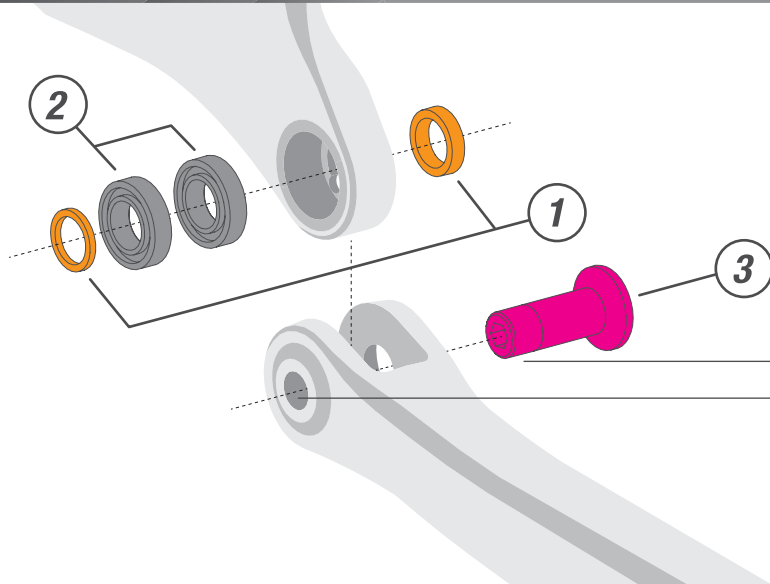
For warranty information on prior model year (2014 and earlier) Norco Bicycles, please contact your local dealer.

FRAME HARDWARE

INDEX



A HORST LINK PIVOT ASSEMBLY

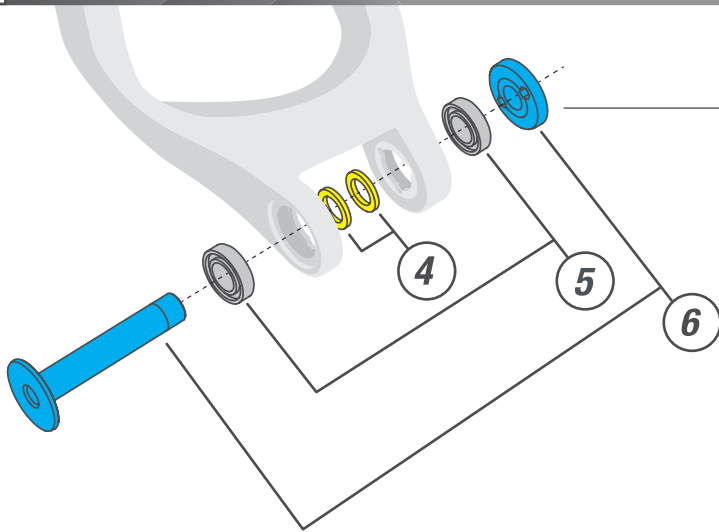


- Torque pivot assembly to 10Nm
- Apply Loctite Blue 242 compound to frame threads if pre-applied threadlock compound is missing or worn off threads

FRAME HARDWARE

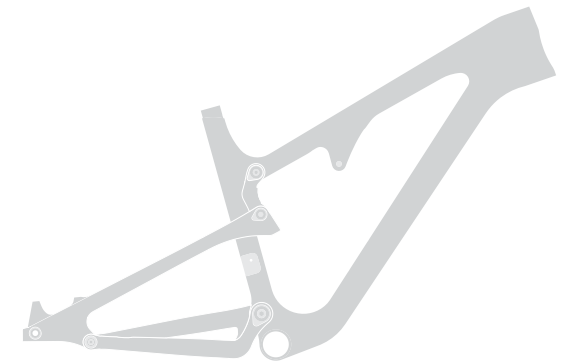
- 1 HORST LINK WASHER KIT**
913300-007 (1pc/each)
- 2 6800 BEARING KIT 10x19x5**
913200-6800 (2pcs)
- 3 HORST LINK BOLT**
913500-005 (1pc)
- 4 SPACER KIT 12x18x2.5**
913300-006 (2pcs)
- 5 6901 BEARING KIT 12x24x6**
913200-6901 (2pcs)
- 6 MAIN PIVOT SHAFT & NUT 15x22.5**
913600-004 (1pc/each)

B MAIN PIVOT ASSEMBLY

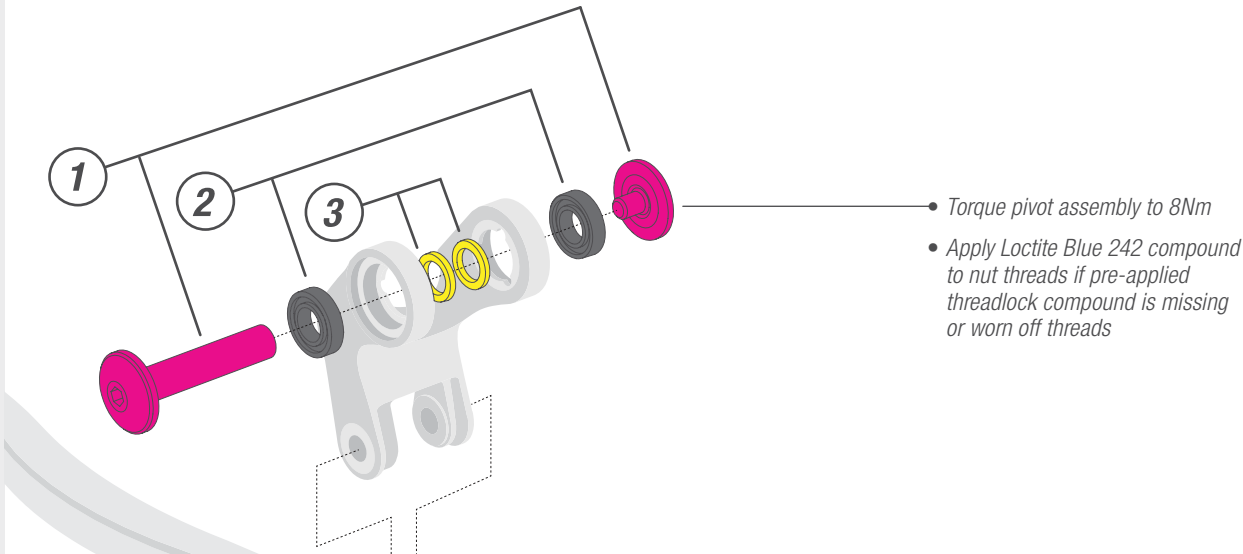


- Torque pivot assembly to 10Nm
- Apply Loctite Blue 242 compound to nut threads if pre-applied threadlock compound is missing or worn off threads

QUICK NAVIGATION



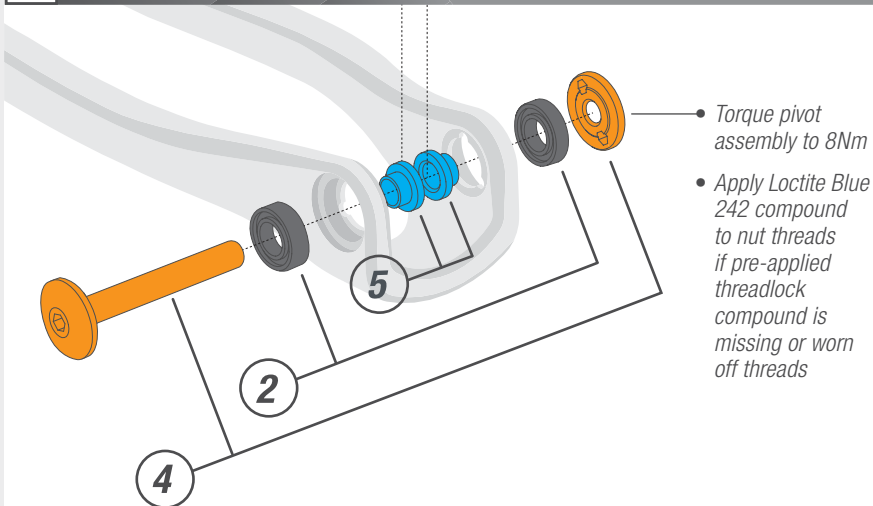
C LINK ARM PIVOT ASSEMBLY



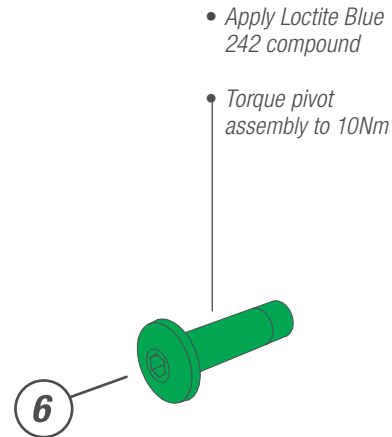
FRAME HARDWARE

- 1** **UPPER LINK ARM SHAFT & NUT**
913500-003 (1pc/each)
- 2** **6901 BEARING KIT** 12x24x6
913200-6901 (2pcs)
- 3** **SPACER KIT** 12x18x2.5
913300-006 (2pcs)
- 4** **LOWER SHOCK SHAFT & NUT**
913600-006 (1pc/each)
- 5** **SPACER KIT** 10x18x3.5 TOP HAT
913800-003 (2pcs)
- 6** **UPPER SHOCK BOLT**
913500-004 (1pc)

D SEAT STAY PIVOT ASSEMBLY



E UPPER SHOCK BOLT



QUICK NAVIGATION



3Nm								
Derailleur Hanger (1pc/each)	Seat Collar (1pc)	Cable Port (1pc)	Cable Port Blank (1pc)	4mm Grommet (1pc)	5mm Grommet (1pc)	Di2 Grommet (1pc)	Di2 Cable Plug (1pc)	Di2 Hole Port (1pc)

FRAME FITTINGS

LINK ARM

- 912301-15-C71
- 912301-15-C72
- 912301-15-C73

SEAT STAY 650B

- 912200-16-7-1
- 912200-16-7-2
- 912200-16-7-3
- 912200-16-7-XX1

SEAT STAY 29"

- 912200-16-9-1
- 912200-16-9-2
- 912200-16-9-3
- 912200-16-9-XX1

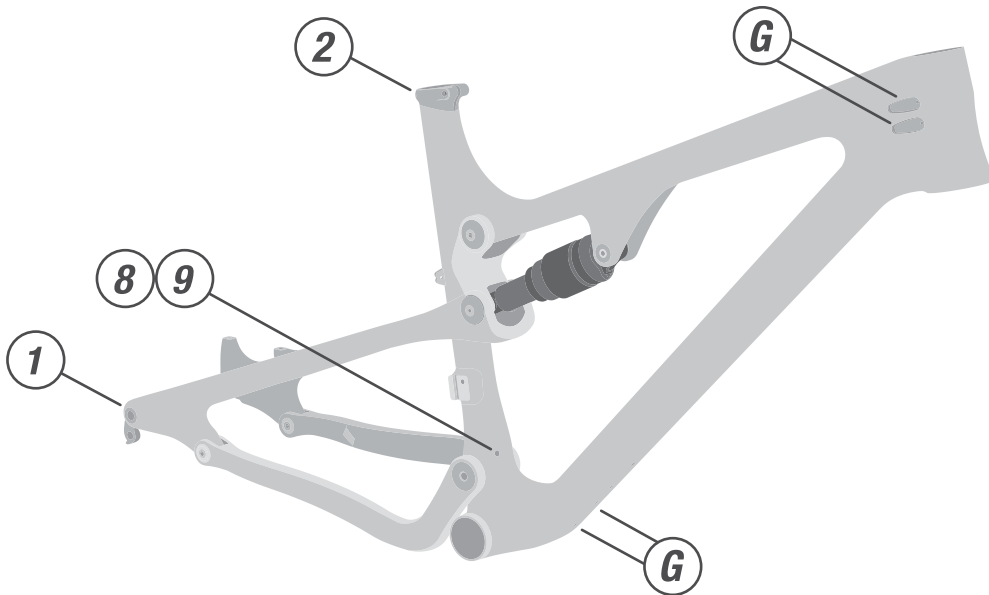
CHAIN STAY 650B

- 912100-16-7-1
- 912100-16-7-2
- 912100-16-7-3
- 912100-16-7-XX1

CHAIN STAY 29"

- 912100-16-9-1
- 912100-16-9-2
- 912100-16-9-3
- 912100-16-9-XX1

2Nm	
M3x8mm Button Head (1pc)	Protective Sticker Sheet (1pc/each)

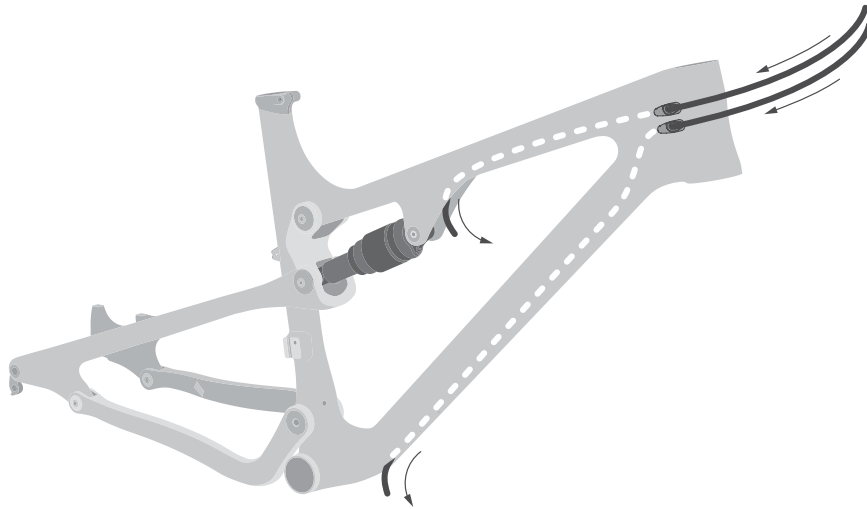


QUICK NAVIGATION

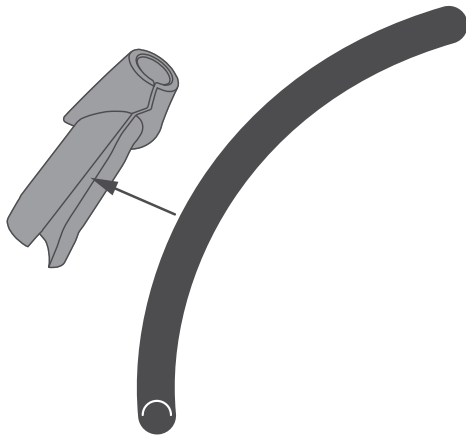


FITTING INSTRUCTIONS

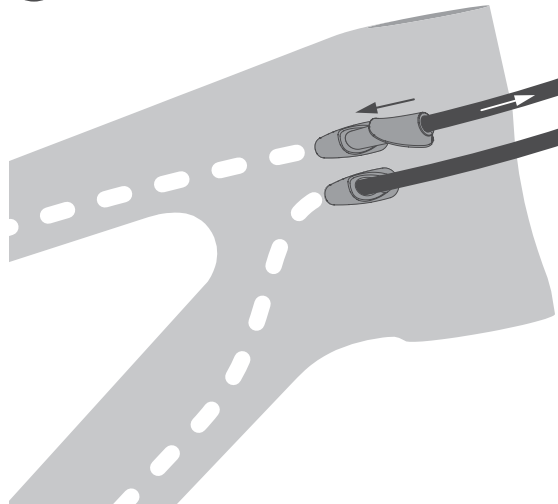
1



2



3



GIZMO CONFIGURATIONS

BRAKE CABLE



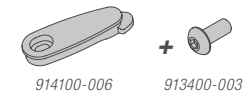
SHIFT CABLE



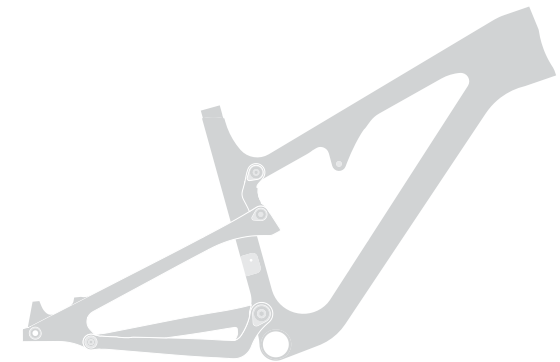
Di2 SHIFT CABLE



BLANK PORT



QUICK NAVIGATION



SUSPENSION SET UP

Dependent on riding style and terrain, rear suspension sag between 20% and 25% is recommended.

To correctly determine sag, the following procedure should be performed while wearing full riding attire including helmet, hydration pack and body armour.

To determine sag:

- Put the bike on a flat surface
- Set the saddle height to the half way point between pedaling and descending
- Turn the shock compression lever to the open setting
- Bounce the suspension firmly a few times to half travel each time.
- Slide the o-ring on the shock all the way to the lip seal
- Slowly sit on the bike with both feet on the ground being careful not to bounce the suspension
- Slowly lift your feet off the ground and allow the bike to tip to either side
- Get off the bike without bouncing the suspension
- Measure the distance between the lip seal and the o-ring

This is your sag measurement.

For the Revolver 7 & 9, this measurement should be between 7.5 – 9.5mm. If your measurement is less than 7.5mm, you need to remove air from the shock. If your measurement is more than 9.5mm, you will need to add air to the shock with a shock pump. When re-checking your sag after adjusting air pressure, be sure to disconnect the shock pump and bounce the suspension a few times to equalize the pressure in the positive and negative air chambers.

For rebound damping tuning instructions, please consult your Norco dealer or visit the shock manufacturer's website.

FRAME SPECIFICATIONS

Rear Wheel Travel	100mm
Shock Eye - Eye Length	165mm (6.5")
Shock Stroke Length	38mm (1.5")
Shaft Eye Hardware	22.2mm x 10mm
Head Set	Integrated 1.125"-1.5"
Head Tube	S.H.I.S IS42/28.6 IS52/40
Bottom Bracket	Press Fit MTB BB92
Seat Post Diameter	30.9mm
Brake Caliper Mount	160mm Post Mount
Chain Guide	Upper Direct Mount
Front Derailleur	Upper Direct Mount
Rear Axle	142x12 L174 M12x1.75 (Maxle standard)

MAINTENANCE SCHEDULE

To ensure optimum suspension performance all bearings and pivot hardware should be inspected for proper function and signs of wear every 30 hours of riding.

If inspection highlights any areas of concern replacement of affected hardware components should be completed by a qualified technician.

Please refer to the detail images in this document for information regarding assembly compounds and hardware torque specifications.

For optimum damper performance (rear shock/ fork) refer to the original manufacturers maintenance guidelines.